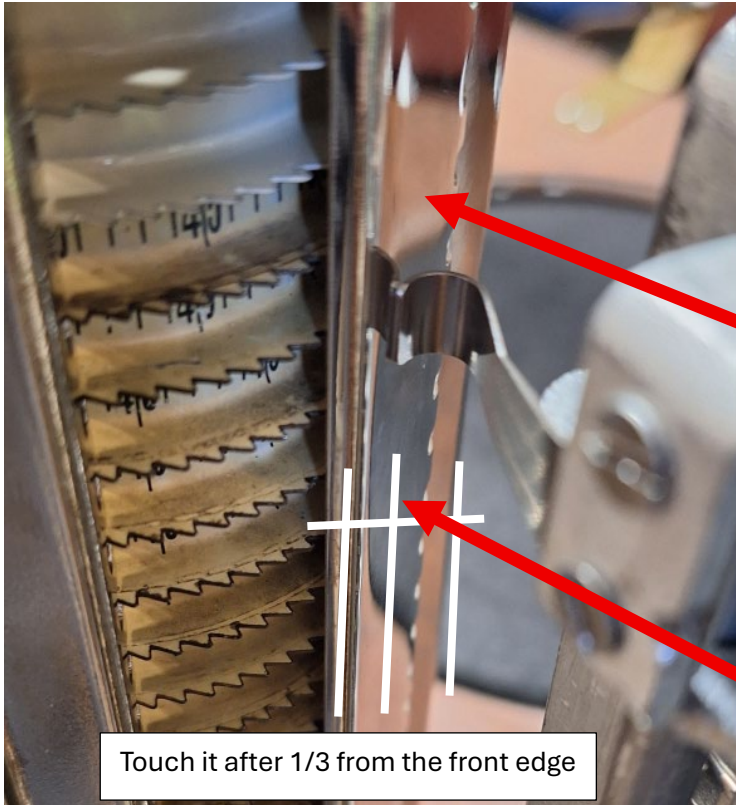


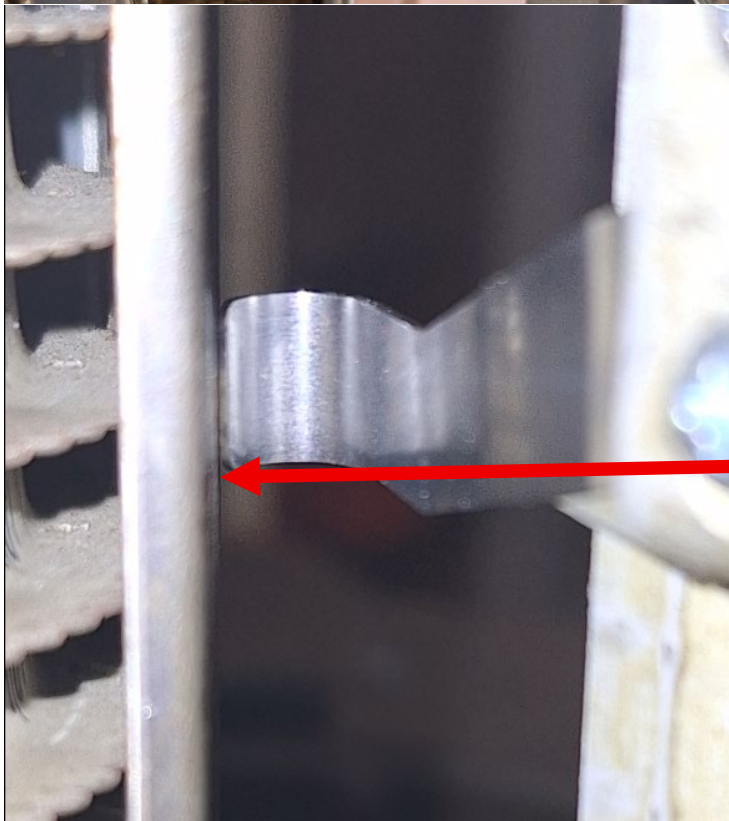
## Instruction for adjusting the spring of the popularity meter for Wurlitzer 750/780/1100



You may need to bend the spring, as the distance between the tray axis and the popularity meter is not always the same.

The sliding surface must be polished so that the spring slides smoothly and quietly. This also reduces friction.

Bend the spring until the back of the spring hook touches the sliding surface past the first third of the front edge to ensure that it does not catch there.



The edge of the spring must be parallel to the sliding surface; otherwise, it may become jammed or the gear may not engage.

